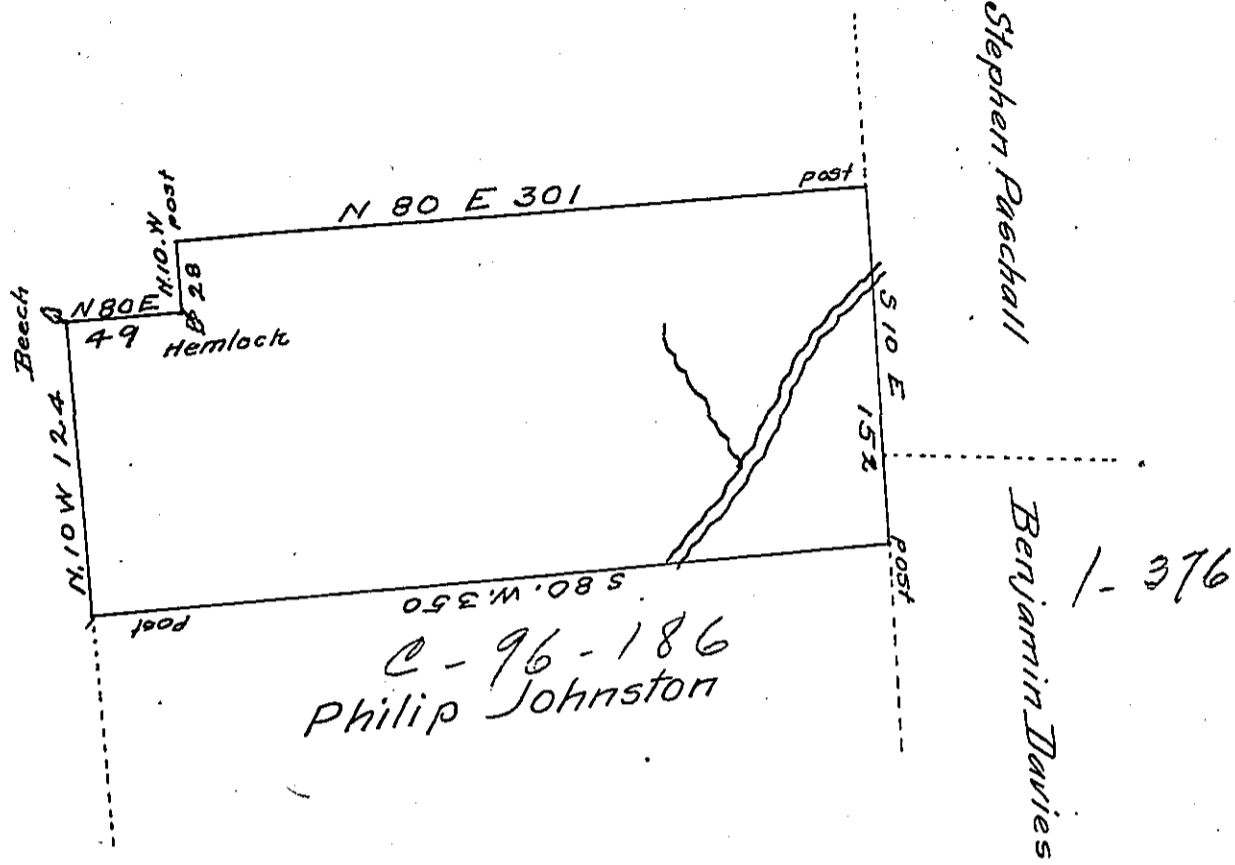


New Wayne Co^y



By Virtue of a Warrant dated the 27th of February 1775 and surveyed the 1st of November 1776 to John Patton the above described tract of land situate on the Head Branches of the West branch of Lechawaxen Creek at the foot of a remarkable bald Mountain in Northampton County containing Three hundred and five acres ninety six perches and the allowance of Six p Cent fo^a

Geo. Palmer D. S.

To John Lukens Esq^r
Surveyor General

IN TESTIMONY that the above is a copy of the original remaining on file in the Department of Internal Affairs of Pennsylvania, made conformably to an Act of Assembly approved the 16th day of February, 1833, I have hereunto set my Hand and caused the Seal of said Department to be affixed at Harrisburg, this eighteenth day of June 1906

Isaac R. Brown
Secretary of Internal Affairs.